

Ref. No.: ADT-COM/077/2012
Date: 13th August 2012

To: Trucking companies and other users of the Khalifa Port Container Terminal

Subject: Update on the trucking route to and from Khalifa Port

Abu Dhabi Terminals' wishes to inform trucking companies and other users of the Khalifa Port Container Terminal that the competent Authorities have issued revised instructions concerning the route container trucks must use when driving to and from Khalifa Port.

The various routes and restrictions are described below. For full-size maps and other information about the Khalifa Port Container Terminal, we recommend you review the Port Users' Information Guide that can be downloaded from Abu Dhabi Terminals' website at <http://adterminals.ae/media-center/press-releases/2012/07/16/khalifa-port-users-information-guide>

Between Khalifa Port and the main road network (unchanged)

While a dedicated access route to Khalifa Port and KIZAD is still under construction, container trucks must use the clearly signposted route

From Khalifa Port:

- Departing the port using Mina Road; then
- Left on Al Taweelah Road, south-east along the KIZAD development; then
- Right on 15th Street, south-west along Al Rahba; then
- Left on 14th Street, east-south-east past Al Rahba Market; then
- Interchange 366, between E11 and E2/E16

To Khalifa port:

- Interchange 366, between E11 and E2/E16; then
- Straight on 14th Street, west-north-west past Al Rahba Market; then
- Right on 15th Street, north-east along Al Rahba; then
- Left on Al Taweelah Road, north-north-west along the KIZAD development; then
- Right, to enter the port using Mina Road

Between Khalifa Port and Musaffah, primary route



As indicated by the yellow line in the illustration above, the primary route from Khalifa Port to Musaffah is via E11.

The use of the E11 is subject to a special permit. To obtain this permit, trucking companies must present themselves to the Abu Dhabi Traffic Police with a confirmation letter from Abu Dhabi Terminals. To obtain your letter please contact:

Arturo Garcia, Gate Manager
Email: arturo.garcia@adterminals.ae
Mobile: +971 (56) 688 3156

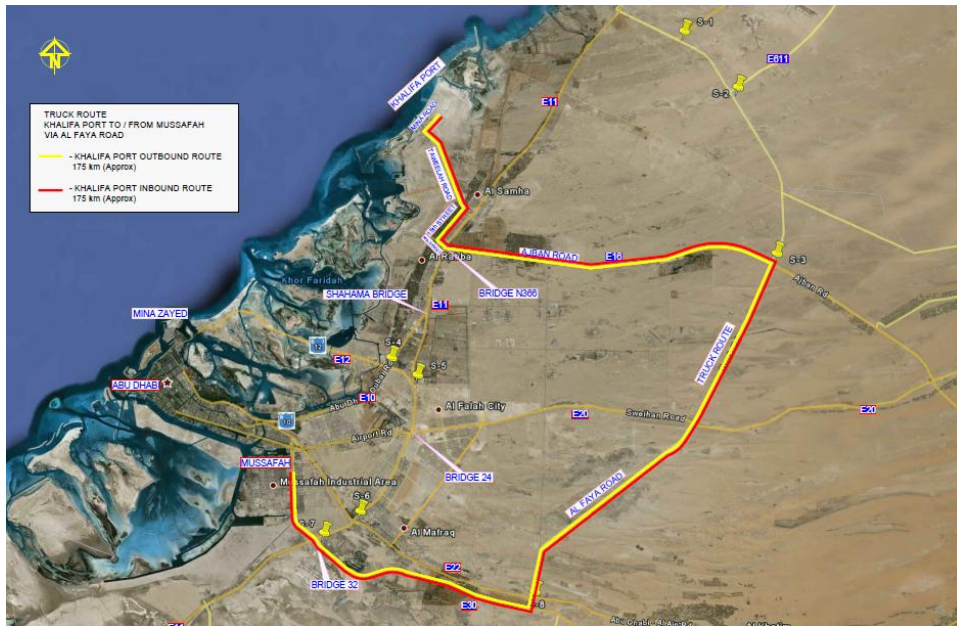
Abu Dhabi Traffic Police has implemented a truck ban on the E11 between the bridge N366 and the E10/E11 junction at New Shahama:

Day	From	To
Sunday through Thursday	07:00	10:00
Friday	No ban	No ban
Saturday	17:00	22:00

As indicated by the red line in the illustration above, the primary route from Musaffah to Khalifa Port starts at the E11, but takes the Al Falah road past Al Falah city before reaching the E16.

This routing ensures container truck can travel the distance free of truck ban periods.

It is specifically stressed that the E11 route is not approved from Musaffah to Khalifa Port, whether or not the company holds the permission mentioned above.
Between Khalifa Port and Musaffah, alternative route



Container trucks may also use the alternative route where the E16 and E22 link with the existing truck route between Abu Dhabi and Dubai (Al Faya Road).

This route is free of separate truck ban periods, and does not require further registration with the Abu Dhabi Traffic Police.

Between Khalifa Port and Mina Zayed



As indicated by the yellow line in the illustration above, the primary route from Khalifa Port to Mina Zayed via E11 and E12.

The use of the E11 is subject to a special permit. To obtain this permit, trucking companies must present themselves to the Abu Dhabi Traffic Police with confirmation letter from Abu Dhabi Terminals. To obtain your letter please contact:

Arturo Garcia, Gate Manager
Email: arturo.garcia@adterminals.ae
Mobile: +971 (56) 688 3156

Abu Dhabi Traffic police has implemented a truck ban on the E11 between the bridge N366 and the E10/E11 junction at New Shahama:

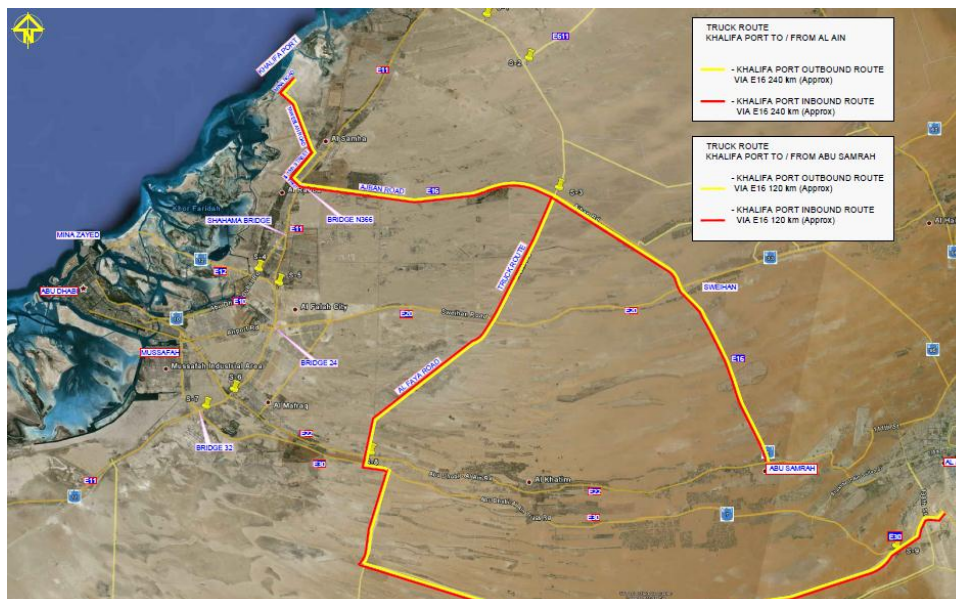
Day	From	To
Sunday through Thursday	07:00	10:00
Friday	No ban	No ban
Saturday	17:00	22:00

As indicated by the red line in the illustration above, the primary route from Mina Zayed to Khalifa Port starts at the E12, before following Al Falah Road past Al Falah city which links to the E16.

This routing ensures container truck can travel the distance free of truck ban periods. It is specifically stressed that the E11 route is not approved from Mina Zayed to Khalifa Port, whether or not the company holds the permission mentioned above.

Container trucks may also use the alternative route via the existing truck route between Abu Dhabi and Dubai (Al Faya Road), linking to E16. This route is free of separate truck ban periods, and does not require further registration with the Abu Dhabi Traffic Police.

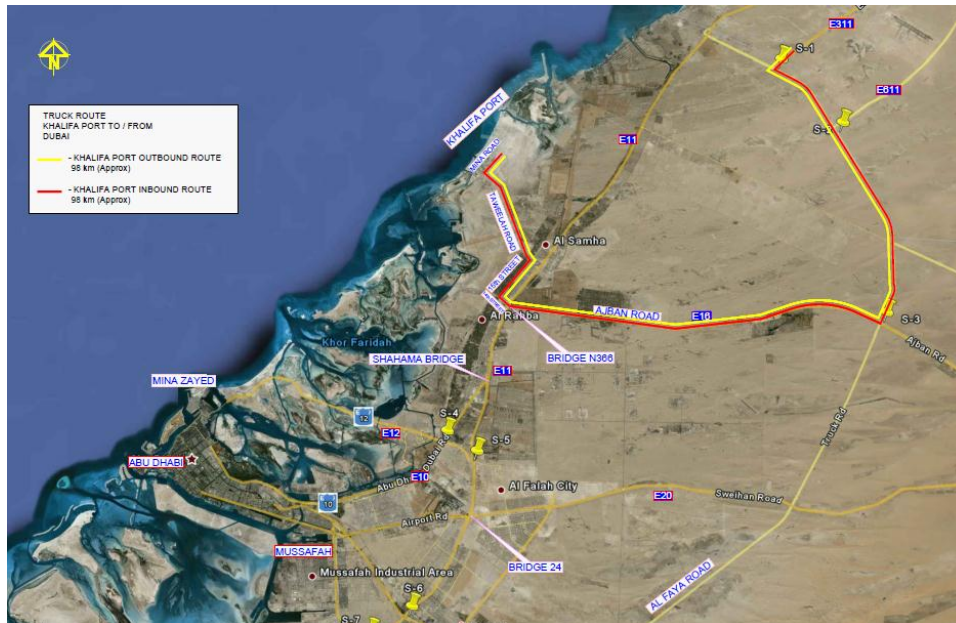
Between Khalifa Port and Al Ain / Abu Samrah



As indicated by the upper yellow and red lines in the illustration above, the primary route between Khalifa Port and Abu Samrah, from where many agricultural and industrial locations can be accessed, is via E16.

There is a truck ban between Abu Samrah and Al Ain proper, so as indicated by the lower yellow and red lines in the illustration above, the primary route between Khalifa Port and Al Ain proper, is via E16 and E40 linked by the existing truck route between Abu Dhabi and Dubai (Al Faya Road).

Between Khalifa Port and Dubai



As indicated by the yellow and red lines in the illustration above, the primary route between Khalifa Port and Jebel Ali / Dubai and the Northern Emirates is via E16, the Truck Road (Al Faya Road) and E311 (Emirates Road).

For further details you may contact: KP.customers@adterminals.ae

For Khalifa Port

Customer Service.